



INSTRUCTION BULLETIN

IB No. 9006242
Machine: 5700 STD
Published: 04-2009
Rev. 00

Installation instructions for **kit number 9006241 - Actuator Replacement [5700 Standard]**

SYNOPSIS:

This kit contains the part needed to replace an actuator on a 5700 standard model.

SPECIAL TOOLS / CONSIDERATIONS: Amp Meter, Measuring Device

(Estimated time to complete: 1 hour)

Carefully read and follow these instructions. The actuator can be easily damaged if not installed as instructed.

PREPARE MACHINE FOR INSTALLATION:

1. Empty the solution and recovery tank.
2. Park the machine on a clean level surface.
3. Remove pads or brushes.
4. Lower the scrub head.

NOTE: If the scrub head is stuck in the raised position, place a block under the scrub head.

5. Turn off the machine.
6. To access the actuator, carefully lift the solution tank and remove the front shroud.

REMOVE OLD ACTUATOR:

1. Unplug the actuator from the main wire harness (Fig. 1).

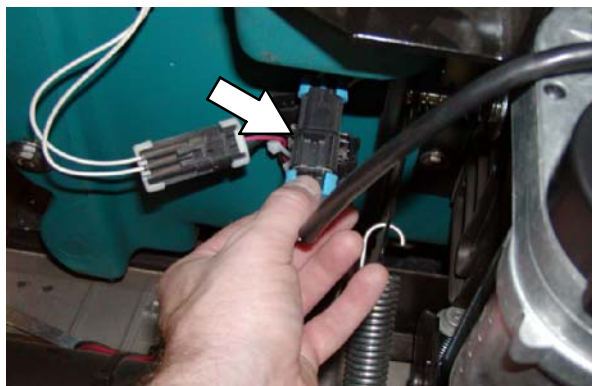


FIG. 1

2. Remove the lower clevis pin from the actuator (Fig. 2).

If a block was used to support the scrub head, remove the block and carefully lower the scrub head to the floor.

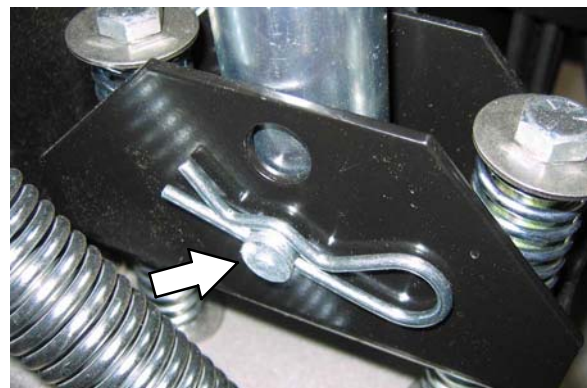


FIG. 2

3. Remove the top clevis pin that mounts the actuator bracket to the machine (Fig. 3). Set the mounting hardware aside.

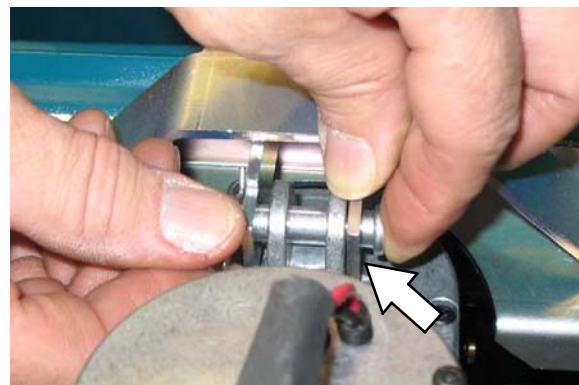


FIG. 3

INSTALL NEW ACTUATOR:

1. Connect the top end of the actuator to the machine using existing hardware (Fig. 4a). Do not connect the lower end of the actuator at this time.
2. Plug the actuator into the main wire harness (Fig. 4b)

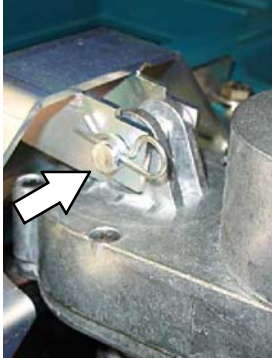


FIG. 4a

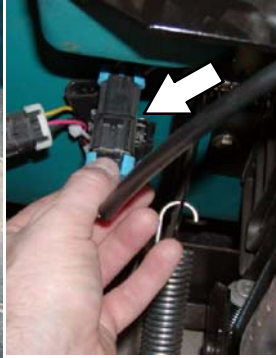


FIG. 4b

3. The actuator is factory set at the upper limit switch position. A packaging spacer is inserted between the tube and gearbox to hold the setting. Remove the spacer. **Do not rotate tube.** (Fig. 5)

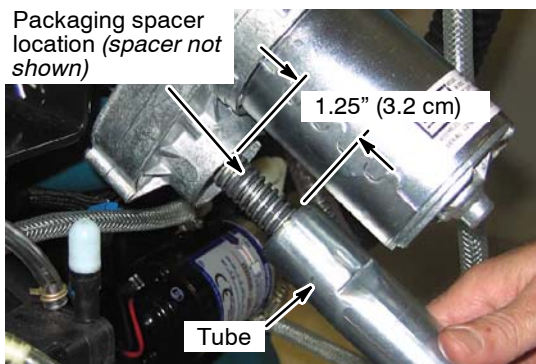


FIG. 5

4. Turn the key to the on position (Fig. 6).



FIG. 6

5. This step may require an assistant. Firmly grip the actuator tube with right hand and press the top of brush switch. As the tube extends, guide it down into the mounting bracket. Release brush switch. (Fig. 7)

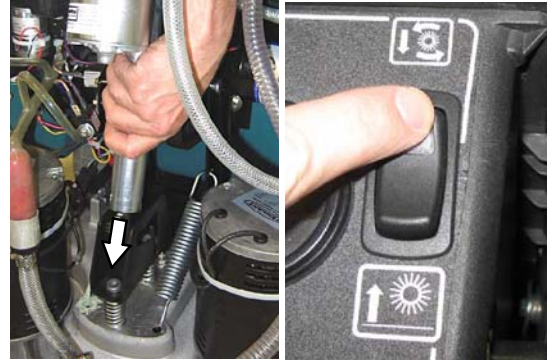


FIG. 7

6. Align tube hole with the correct bracket hole as described below and reinstall the lower clevis pin and cotter pin (Fig. 8).

Use top hole for 900 mm Cylindrical Scrub Head

Use bottom hole for all other Scrub Heads

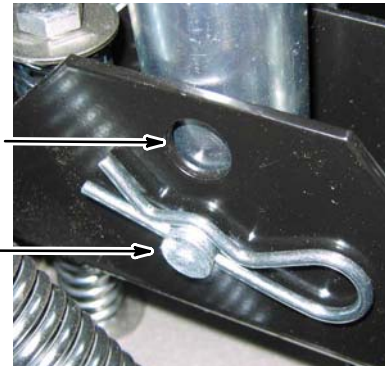


FIG. 8

TEST ACTUATOR FOR PROPER OPERATION:

1. Turn key on and raise the scrub head to the up position (Fig. 9). Reinstall pads or brushes with key off.



FIG. 9

2. Fill solution tank with water.
3. Park the machine on a smooth floor. Turn off the key.

4. Unplug the transaxle wire harness connector to keep machine stationary while testing (Fig. 10).

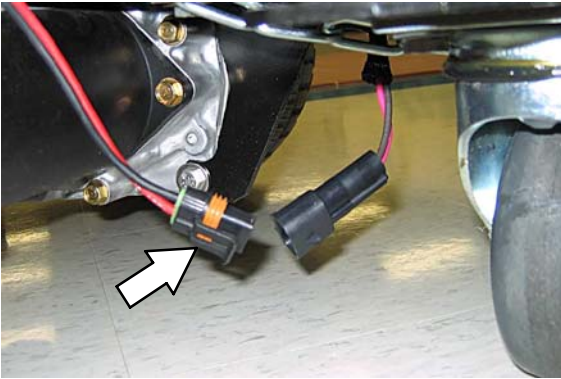


FIG. 10

5. Turn the key on and lower the scrub head.
6. Using an amp meter, measure the amp reading at the positive battery cable while rotating the control handle (Fig. 11).

The reading should be between 5-25 amps.

NOTE: Machine must be tested with water on a smooth surface to ensure accurate reading.



FIG. 11

If the amp reading is outside the specified range adjust the actuator tube as described below:

Lower the scrub head and remove the lower clevis pin.

In half turn increments, rotate the actuator tube counter-clockwise to decrease or clockwise to increase the amp reading (Fig. 12). Measure amp reading. Continue to rotate in half turn increments until correct reading is achieved.

NOTE: The clevis pin must not touch the bottom of the actuator screw and the top of the tube must not be closer than 1.25" (3.2 cm) from gear box .

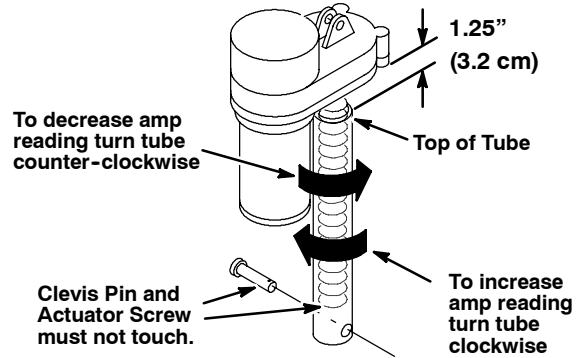


FIG. 12

7. Reconnect the transaxle wire connector and reinstall the front shroud.